

Renew Montana Network



Field Guide

August 2025

www.renewmt.org



About the Network

The **Renew Montana Network** is a grassroots movement of pastors, church leaders, and associational leaders from every region of Montana. We work in cooperation with the ministry of the **Montana Southern Baptist Convention**, and with like-minded Kingdom partners. We work collaboratively to build the network across the state to achieve common Kingdom goals with shared Kingdom values. In doing so, we champion the work of local associations/regions in their ministry to strengthen and encourage pastors and churches.

Together, the Renew Montana Network is passionately *pursuing a culture of spiritual renewal*. That's our mission. Our aspiration is to see every pastor and church experiencing the joy of renewal. We share resources, training, and ministry tools to see God reshape the culture of our churches with spiritually renewing DNA.

Our prayer is the Holy Spirit will empower *a movement of renewed churches effectively advancing the Kingdom*. That's our vision. God can transform any church that is fully submitted to Him and unleash them to reshape the spiritual landscape of Montana.

Our Strategic Values:

Pursuing Christ

We delight in Him!

We experience His presence!

Pursing Christ's Community

We are devoted to one another!

We experience deep relationships!

Pursuing Christ's Commission

We are dependent on the Holy Spirit!

We experience lives being changed!



These values are centered on the authority of Christ. They articulate our desire to live for His glory with purpose and passion. They express our hope in the gospel and the power of God's presence. They demonstrate our love and care for God's people, and they unite us in our call to make disciples and advance the Kingdom of God.

The life of a church is reflected in the culture of the church.

Is your church culture healthy? Is it life-giving, fruit bearing, and reproducing? Is it Christ centered, and joy filled? Is it grace-giving and Holy Spirit empowered?

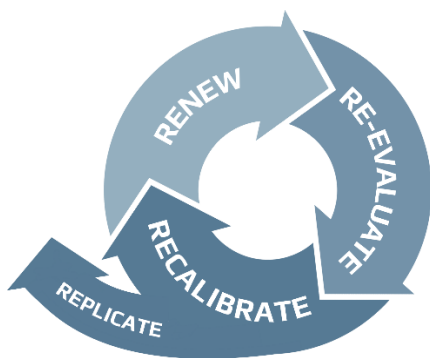
Spiritual problems are not solved with new growth strategies

A culture of spiritual renewal must be intentionally cultivated! Therefore, churches are encouraged to pursue **40 Days of Prayer for Spiritual Renewal**. Our hope is the Lord will reshape the **heart-posture** and **mindset** of every church family. Imagine the impact of a church living in submission to Christ, abounding in love, living with purity, and focused on Kingdom priorities, all to the glory of Christ. **Sample:**

Renewal Leads to Replication

In Scripture, we see the **CHURCH** continually seeking and experiencing spiritual renewal. Each local church engaged their community with the gospel, and they were empowered by the Holy Spirit to replicate spiritually renewing DNA in their disciple-making process and leadership development. Christ was magnified. Believers were edified. The **CHURCH** was multiplied. This is the desire of the Renew Montana Network.

We believe a church with a spiritually renewing culture (**no matter the size of the church**) will effectively advance the Kingdom by pursuing their God-given mission. They will equip the saints for the ministry, build ministry leaders, and send out missionaries. By working together, churches can support and encourage sister churches through renewal, refocusing, and revitalization. We can also partner to replant churches and start new churches.



It all begins with spiritual renewal!

Our hope is that renewed churches will take the next step to re-evaluate the effectiveness of their ministry, with a few questions in mind. **What is Christ leading us to do? What changes are necessary to be healthier and more effective?** We champion an on-going process of **renewing, re-evaluating, and recalibrating** to see churches replicating spiritually renewed disciples for Kingdom advance.

DAY 9

PURSUING CHRIST REQUIRES DIVINE POWER FOR LIFE AND GODLINESS.

As you meditate on the selected passage, contemplate the words and phrases that speak to you about making every effort to supplement your faith with qualities that produce fruit.

2 Peter 1:3-11 (ESV)

His divine power has granted to us all things that pertain to life and godliness, through the knowledge of him who called us to his own glory and excellence, by which he has granted to us his precious and very great promises, so that through them you may become partakers of the divine nature, having escaped from the corruption that is in the world because of sinful desire. For this very reason, make every effort to supplement your faith with virtue, and virtue with knowledge, and knowledge with self-control, and self-control with steadfastness, and steadfastness with godliness, and godliness with brotherly affection, and brotherly affection with love. For if these qualities are yours and are increasing, they keep you from being ineffective or unfruitful in the knowledge of our Lord Jesus Christ. For whoever lacks these qualities is so nearsighted that he is blind, having forgotten that he was cleansed from his former sins. Therefore, brothers, be all the more diligent to confirm your calling and election, for if you practice these qualities you will never fall. For in this way there will be richly provided for you an entrance into the eternal kingdom of our Lord and Savior Jesus Christ.

Reflection Questions:

WHAT IS GOD REVEALING TO YOU ABOUT HIS DIVINE POWER?

WHY IS "MAKING EVERY EFFORT" IMPORTANT IN YOUR PURSUIT OF CHRIST?

WHAT QUALITIES DO YOU BELIEVE YOU ARE LACKING IN YOUR LIFE?

WHAT STEPS OF OBEDIENCE ARE REQUIRED TO BE FRUITFUL?

Respond:

RESPOND TO THE PROMPTING OF THE HOLY SPIRIT WITH WORSHIP-BASED PRAYER:

LORD, I PRAISE YOU BECAUSE...

LORD, FORGIVE ME FOR...

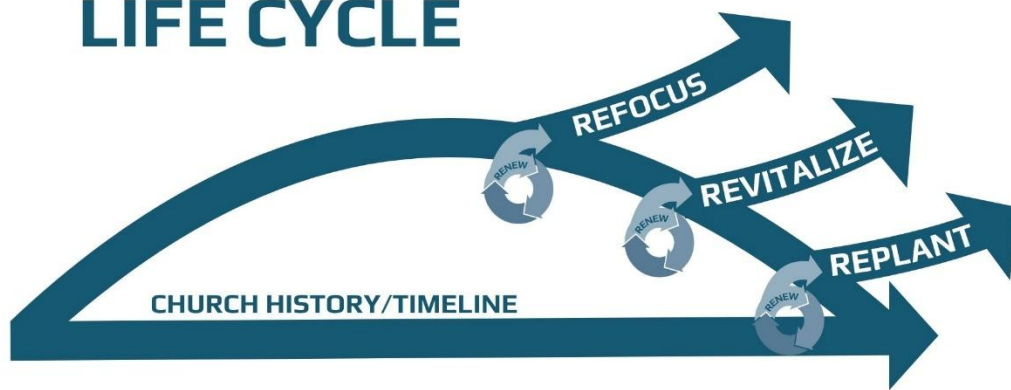
LORD, I DESIRE TO...

LORD, I PRAY FOR MY CHURCH TO...

Journal:

Journal what is on your heart as a prayer to the Lord. Be open and honest. Express your hurt, frustration, doubt, concerns, and needs. Turn these over to the Lord. **Remember** who you are in Christ. **Repent** of the sinful heart postures, mindsets, or behaviors that quench the Holy Spirit. **Rejoice** with a grateful heart.

THE CHURCH LIFE CYCLE



The life cycle of a church will vary. The seasons of growth, plateau, or decline have contributing factors unique to their context. Churches that are continually **renewing, re-evaluating, and recalibrating**, in submission to Christ, will recognize underlying

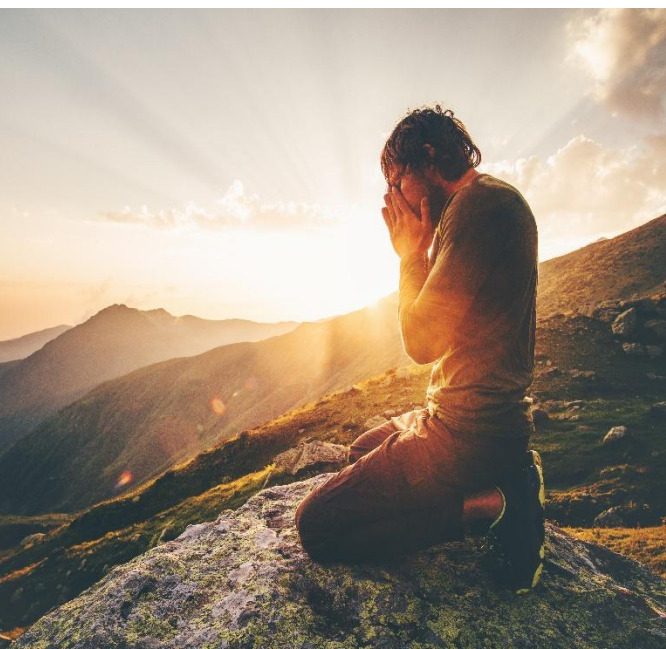
issues that impede Kingdom advance and respond. We pray healthy churches will sustain growth, plateauing churches will make course corrections, and declining churches will make radical changes. Even a dying church can see new life restored, all to the glory of King Jesus!

A Movement...

Imagine the impact of a network of renewed pastors and churches replicating spiritually renewing DNA in disciples, spiritual leaders, and missionaries. Envision churches making disciples and planting and replanting churches. If we respond with obedience and faith, God will reshape the spiritual landscape of Montana with the GOSPEL!

Renew Montana Process Overview

The Renew Montana Network is not a program. We champion spiritually renewing practices with pastors and churches. We build strong relationships with pastors and churches. We share principles for effective ministry and encourage and support pastors and churches in their God-given mission.



PASTOR TRACK

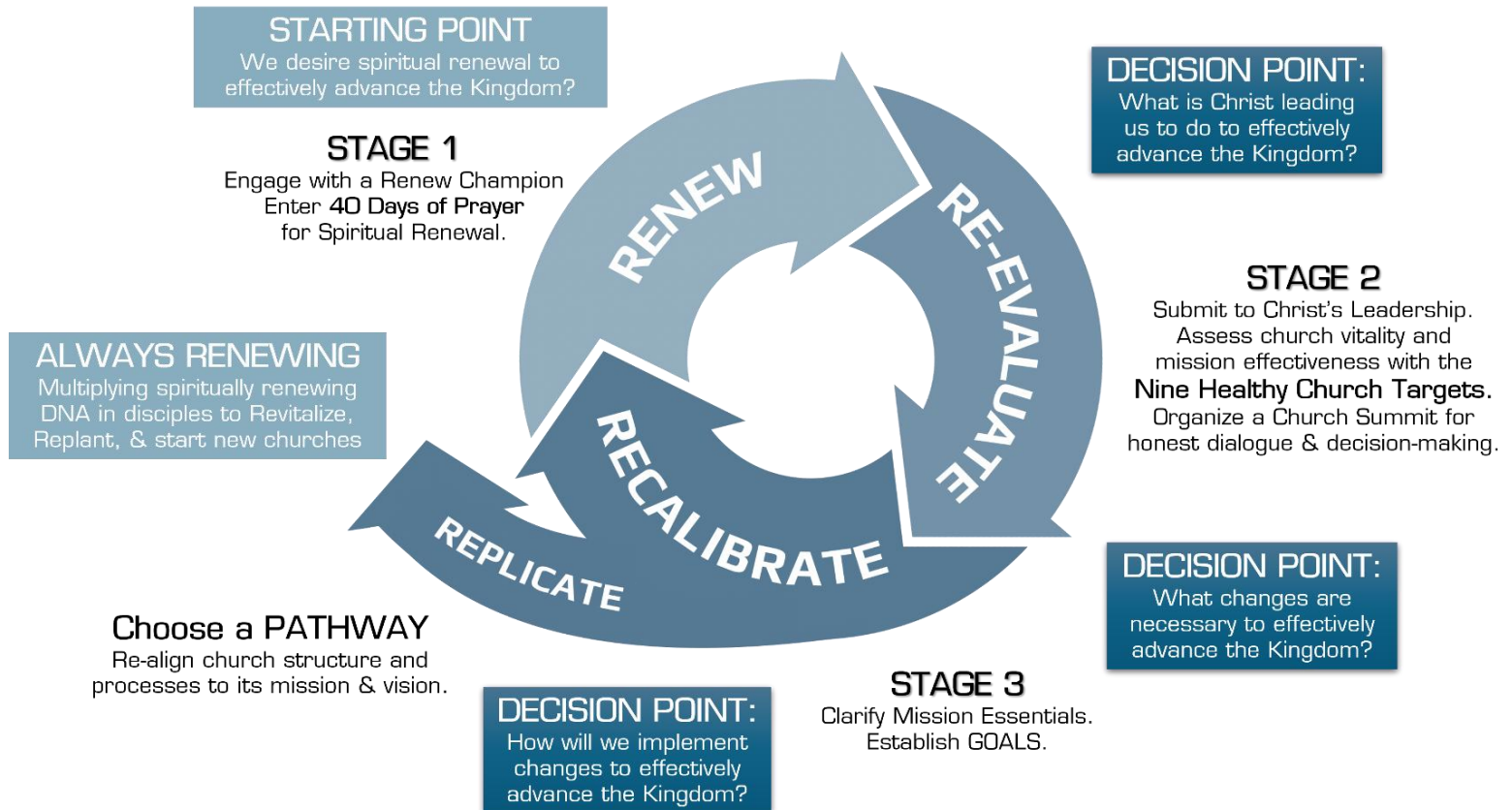
The Pastor Track is designed for pastors and wives to build friendships and to maintain healthy rhythms in ministry.



Start by taking the **Pastor Health Assessment**. Scan the QR code. A Renew Montana Champion will walk beside you to **Renew, Re-evaluate, & Recalibrate** life and ministry.

CHURCH TRACK

The Church Track cultivates personal renewal to unify believers in the mission and vision of their church. At each stage of the Church Track, there is a **DECISION POINT**, and the Renew Montana process leads to a Pathway: Refocus, Revitalize, or Replant



PATHWAYS

A healthy church that is experiencing renewal can **REFOCUS** under pastoral leadership and realign structures and processes to continue effective ministry in its community.

A declining church that is experiencing renewal can **REVITALIZE**, with the support of the Renew Montana Network, and take dramatic steps toward health to regain an effective ministry in its community.

A dying church can **REPLANT** by re-investing its facility and resources, so a new church can have an effective ministry in that community.

The Nine Healthy Church Targets



The **Nine Healthy Church Targets** offer a standard with which to measure ministry success. What is the disparity between what we say we believe and what we do?

In Christ, there are **THREE IDENTITIES** that define us. In the Kingdom, there are **THREE FOUNDATIONS** for belief and practice. In the local church, there are **THREE STRUCTURES** that guide the mission. Are you hitting the Nine Healthy Church Targets?

THREE IDENTITIES

Worshippers – The local church is designed to bring honor and glory to God, and each believer is created to be a worshiper of God. Believers reflect His character, worship Him together, and serve Him wholeheartedly. Their lives are to be centered upon Jesus and the Gospel, as they abide in Him and rely fully on the Holy Spirit. (1 Peter 2:4-9; Ephesians 3:8-10; Romans 11:36)

Family – The local church is the family of God. Each believer is devoted to encouraging, edifying, and caring for one another. This community of believers is called to love and serve one another, bear one another's burdens, forgive one another, and even rebuke one another in grace giving relationships. (John 13:24-25; Eph. 2:11-22; 1 Peter 2:9-10)

Missionaries – The local church is called and commissioned by God to participate in His mission, and each believer is a witness of God's grace and a living testimony of the goodness and greatness of God. The local church is designed to live on mission, make disciples, and take the Gospel to the world. (1 Peter 2:11-12; Matt. 5:13-16, 28:18-20; John 20:21-23; Acts 1:8; 2 Corinthians 5:1)

THREE FOUNDATIONS

Gospel – The good news about Jesus must be the center of every local church. Believing and applying the Gospel is our only hope for salvation, spiritual renewal, and church revitalization. Churches must never move on from the Gospel but be saturated by grace. (1 Peter 2:4-8; Col. 2:6-7; 1 Cor. 15:1-4; 1 Timothy 3:16)

Scripture – Scripture is the inerrant, inspired Word of God. The Bible is the sufficient source for life and godliness as well as for the revitalization and replanting of churches. Thus, the faithful, clear preaching of God's Word is essential. (2 Tim. 3:16-17; Ps. 119)

Prayer – God intends to do greater works through us than Jesus did, and prayer is the primary means by which He keeps us reliant upon Him and enables us to do His works in power. The Spirit empowers spiritual renewal and revitalization through prayer. (Acts 2:42, 4:29-31; 6:6-7; 9:3; John 14:12-14; Col. 4:2)

THREE STRUCTURES

Leadership – God gifts the church for leadership through pastors and deacons. Pastors provide oversight of souls, sound preaching, godly examples, and overarching leadership and direction for the church to equip the church members to minister to one another and their community. Deacons are servants of the church and provide leadership to care for the church's unity and physical needs. (Philippians 2, 1 Peter 5:1-5, Eph. 4:7-16, Hebrews 13:17, Mark 10:42-45)

Membership – Every believer is called to covenant with a local church to live out the “one another” commands of the New Testament. By submitting to specific pastoral leadership and being accountable to a particular congregation, they persevere together in pursuing holiness to fulfill God's mission. (Romans 12:3-13; Hebrews 13:17; Matthew 18:15-20; Acts 6:3; 13:2-3; 15:22; 1 Corinthians 5:2; 2 Corinthians 2:6)

Discipleship – From evangelizing the lost to building up the saints, churches are called to make disciples. Healthy churches have intentional strategies and structures to involve people in discipleship, no matter where they are on their spiritual journey. (2 Tim. 2:1-2; Titus 2:3-5; John 20:21-23; Acts 1:8; Matt. 28:18-20)

Timeline

The timeline of the Renew Montana Process varies from church to church.

Renew	Re-evaluate	Recalibrate
60 Days	60-90 days	Ongoing Implementation
<ul style="list-style-type: none"> - Explore Renew - Make Commitments - 40 Days of Prayer - Celebration Gathering 	<ul style="list-style-type: none"> - Explore Re-evaluation - Make Commitments - <i>Flickering Lamps</i> - Form a Renew Team - Assessments - The Church Summit 	<ul style="list-style-type: none"> - Refocus may take months of adaptations and improvements. - Revitalize will take years of steady change and restructuring - Replant is dependent on adopting church and/or replanter

The Step-by-Step Process

RENEW: (Stage One)

The purpose of this stage is to **INVESTIGATE** God's Word and discover His heart for spiritual renewal.



Pastor Track

The health of the pastor and his wife are essential in cultivating a culture of spiritual renewal. The Renew Montana Network is committed to offering connection points, resources and soul care opportunities. Pastors and wives need trusting relationships for encouragement and support as they walk through underlying issues that can deplete their energy, distract their focus and derail their ministry effectiveness.

First Step: Take the [Pastor Personal Health Assessment](#).

Next Step: Engage with a Renew Champion and discover the value of pursuing spiritual renewal in community with other pastors and wives.



Pastor Care Opportunities:

- Pastors can join a local Pastor Encouragement Network (PEN).
- Pastors can gather online for prayer and regular fellowship.
- Pastors can explore options for coaching with another ministry leader.
- Pastors and wives can join a regional Pastor Care Cohort.
- Pastors and wives can experience a Pastor Care Retreat.
- Wives can join the Pastor Wives Facebook group.
- Wives can experience the Pastor Wives Retreat.
- Wives can explore a regional Wives Outing event.

Church Track

First Step: Engage with a Renew Montana Champion. Explore the renewal process. Make commitments to enter Stage One.

Next Step: Engage your church in [40 Days of Prayer for Spiritual Renewal](#).

- The 40-day prayer guide is built on three strategic values
 - Pursuing Christ, Christ's Community, and Christ's Commission
 - As churches participate in the 40 days of prayer, they will investigate what the Scriptures say about these pursuits and invite the Holy Spirit to help them develop a biblical heart-posture and mindset and to establish the right priorities necessary to create a culture of renewal.
- Churches are encouraged to integrate this 40-day prayer emphasis into every phase of church life using the **40 Days of Prayer Tool Kit**.

RE-EVALUATE: (Stage Two)

The purpose of this stage is to **IDENTIFY** God's design for the local church and measure their health based on the Nine Healthy Church Targets. As a church submits to the leadership of Christ, He will lead and empower His church to accomplish their God-given purpose with a clearly defined mission and a strategic plan for making disciples.

The Assessment Process

First Step: Engage with the **Renew Montana Champion** in your region to explore the re-evaluation and recalibration process of the Church Track. Make commitments to enter the Stage Two process.

- Review of the **Renew Montana Process**.
- Review the **Nine Healthy Church Targets**.
- Explore the *Flickering Lamps* Resources.
 - Renew Montana strongly recommends the church engage in a six-week study of *Flickering Lamps: Christ and His Church* by Henry and Richard Blackaby **BEFORE** conducting surveys.
 - The goal is to experience a probing look at its spiritual health and evaluate if the church's priorities reflect the priorities of God.
 - The church is encouraged to use the **Flickering Lamps Tool Kit** for planning and implementation

Next Step: Form a **Renew Team** to lead the assessment process. The Renew Team is selected and approved by the members of the church. They will **covenant** themselves to gather data and report to the church their findings.

- The **Healthy Church Survey** measures health in the Nine Target areas.
- The **Community Survey** discovers community needs and opportunities.
- The **Community Demographics** will give a clear picture of their community.
- A Church Constitution and By-laws review will examine church function.

After the completion of the assessments, the church **Renew Team** will coordinate with the **Renew Montana Champion** to plan an interactive **Church Summit**. The Church Summit is designed to engage the church with honest dialogue concerning the health of the church. The church will review the assessment data and take necessary action.

The size and scope of church participation in the Church Summit will depend on the size of the church. For most churches, the Church Summit will involve its active members and regular attenders. For larger churches, who demonstrate vitality and the ability to refocus, the Church Summit may be composed of the staff and lay leaders of the church's ministry teams. The Renew Montana Champion will work with local church leaders to determine the best fit for each situation.

The Church Summit

Day 1 – REVIEW & EXAMINE – the church **Renew Team** will report their findings and consider the vital signs of the church. The church will reflect and respond to Scripture on the heart of God, the meaning and cost of discipleship, the mission of the church, and the functions of a healthy church. **What is Christ asking us to do?** Then, they will participate in a SWOT analysis (Strengths, Weaknesses, Opportunities, Threats).

Day 2 - DECISION POINT & RECALIBRATION - The Church Summit is designed to bring the reality of the church and its impact on its community to a crossroads. **What changes must be made to effectively advance the Kingdom?** The hope is that participants of the Church Summit will be able to discern God's next steps, and agree to act, based on what they have learned and experienced in the Renew Montana process. If more prayer and discovery are needed, churches may reconvene to address deeper underlying issues. It is important to keep moving forward.

At this metaphorical crossroads, churches must choose a **Pathway** to realign the church to their God-given mission and vision. They answer this question: **How will we implement changes to effectively advance the Kingdom?** The church will evaluate the **Essentials for Effective Ministry** and will be guided to establish goals for each. These goals are Specific, Measurable, Achievable, Relevant, and Time-bound (S.M.A.R.T).

- These goals identify the specific steps to be taken for each essential.
- These goals outline the rubric to measure success.
- These goals align the church to mission and vision.
- These goals establish the parties responsible, how often they will meet to evaluate progress, and their accountability to report back to the church.

Essentials for Effective Ministry

A strategic plan is based on biblical principles, models and exhortations. The following questions help churches determine the focus and scope of S.M.A.R.T goals.

Do we have an ongoing **PRAYER STRATEGY** that intentionally and routinely fosters spiritual renewal and unites and empowers the church in its mission and vision?

Do we have a **DISCIPLESHIP STRATEGY** that systematically fosters spiritual growth for maturity and multiplication?

Do we have a **LEADERSHIP DEVELOPMENT STRATEGY** that identifies, equips, and empowers ministry volunteers, and trains those God is calling to leadership roles?

Do we have a **COMMUNITY ENGAGEMENT STRATEGY** that serves people in need and equips saints to share the hope of the gospel as everyday missionaries?

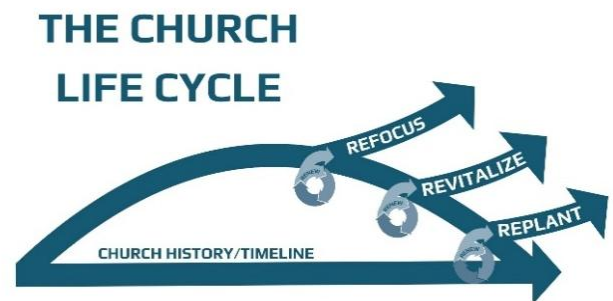
Churches may also consider ways to update the structures and processes of the church to improve the ministries of the church. This often includes the format of the worship service, the quality of the Student Ministry, and the effectiveness of the First Impressions Team. Churches may consider facility upgrades and organizational changes. Churches may need to address disunity and dysfunctional leadership. These all flow from spiritual renewal and the God-given mission and vision of the church.

RECALIBRATE: (Stage Three)

The purpose of this stage is to **IMPLEMENT** God's plan for the local church with the specific goals and action steps the church has been led to pursue. They must choose a **PATHWAY** based on the general health of the church, the leadership in place, and the amount of support necessary.

REFOCUS

The goal of the Refocus Pathway is for a healthy church to experience new momentum through spiritual renewal. They have the leadership, resources, mindset, and heart posture to effectively advance the kingdom by re-aligning the church's processes and priorities to its God-given mission. This church will retool to develop new skill sets and make minor course corrections and improvements.



It's good to remember that the ministry structure of a church should not be rigid but fluid. This mindset helps ensure that the church's ministry structure fits its ministry goals. Refocusing may take several months for the pastor and ministry team to implement. They will continually evaluate progress and are motivated to improve the way the church functions based on shared strategic values.

REVITALIZE

The goal of the Revitalization Pathway is to breathe new life into the church through spiritual renewal. This church recognizes radical changes must be made in the church to effectively advance the Kingdom. Church members understand that if the church continues its present course, it will continue to have less impact on their community. The church adopts new structures, goals and processes centered on a renewed mission and vision.

True revitalization is not increasing the church's activity. It is always the work of the Holy Spirit. Submission to Christ is essential and "sacred cows" must be eliminated. It may take several years for the desired goals to be implemented. Ongoing improvements are made through continual renewing, re-evaluating, and recalibrating.

Revitalize with church leadership – The Renew Montana Network will offer support and encouragement to achieve stated goals.

Revitalize through Fostering – The church explores a partnership with a healthy church. The healthy church offers leadership, guidance and support based on mutual agreements. Benchmarks are established to define the duration and scope of the fostering process.

Replant

The goal of the replanting pathway is to redeem the resources of a church that recognizes it lacks the ability to renew, refocus, or revitalize. The church votes to dissolve and release the church facility and remaining financial resources to the MTSBC, the local association, or a sister church. These are preserved for a new work in that same location. There are two main ways that the remaining members can be involved in a replant. In both cases, they must submit to new leadership, structure and vision.



Replant through Adoption – A healthy church adopts the replanting church, and restructures the leadership, mission, philosophy of ministry, and processes. The history of the former church is celebrated, and the vision of the new church is embraced.

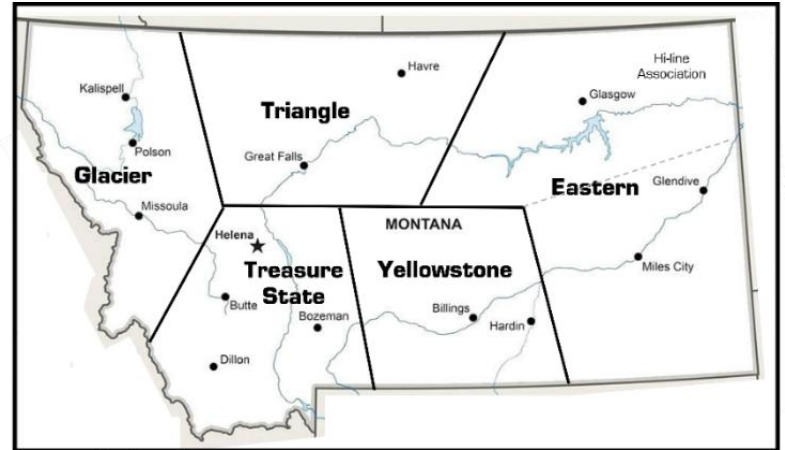
Become a Missional Community in preparation for a new church. Members of the former church may be invited by the replanting church to actively pray for a new church until a church planter/replanter is identified. They experience fellowship and cultivate the soil for a new church through community service and gospel sharing.

Replicate

The fruit of renewal includes replication. As you walk through the Renew Montana process, consider how you and your church will engage other pastors and churches in need of spiritual renewal. Consider how your church culture is changing and tell your story. Model the tools and skills you have developed. Cast a vision in your church to expand the reach of the gospel by developing and deploying everyday missionaries. Partner with sister churches to revitalize, replant, and start new churches.

Renew Montana Regions

Renew Montana works closely with associational and regional leaders to connect **pastors to pastors** and **churches to churches**. Together, we are building and refining the network. We believe these local relationships are essential to effectively advance the Kingdom, as they foster enduring friendships, collaboration, coaching, and partnership.



Partnership

Our network is a cooperative of like-minded pastors and churches who share our values. You and your church can be a partner.

Guide a church through 40 Days of Prayer for Renewal.

Coach a pastor through renewal, refocusing or revitalization.

Foster a church through revitalization.

Adopt a church through replanting.

Join the movement!

www.renewmt.org

Network Resources

40 Days of Prayer Tool Kit
Church Health Assessments
Demographic Study (through NAMB)
Ministry Coaching
Evangelism Tool Kit & 3 Circles Training

Flickering Lamps Tool Kit
Community Surveys
Pastor Health Assessments
Discipleship Tools
Leadership Development Training

Regional & Statewide Events

Pastor Care Retreats
Pastor Care Cohorts
Pastor Encouragement Networks
Pastor's Wives Retreat

MPACT Montana (Oct) & Refresh (Mar)
Associational Workshops & Retreats
Send Network Training

Recommended Resources for Renewal

A Call to Solemn Assembly by Richard Owen Roberts

The Peacemaker by Ken Sande

Don't Blow Up Your Ministry by Michael Mackenzie

Emotionally Healthy Discipleship by Peter Scazzero

Replenish by Lance Witt

Praying the Bible by Donald Whitney

Returning to Holiness by Gregory Frizell

Return to Me by Claude King

Recommended Resources for Developing Revitalization Leaders

Reclaimed Church by Bill Henard

Flickering Lamps by Henry and Richard Blackaby

Reclaiming Glory by Mark Clifton

Biblical Church Revitalization by Brian Croft

Am I a Replanter by Bob Bickford & Mark Hallock

Leading Major Change by Jeff Iorg

Pathways to Partnership by Bob Bickford & Mark Hallock

Recommended Podcasts

Revitalize & Replant with Mark Clifton and Mark Hallock

The Rural Pastor with Andy Addis and Kyle Bueermann

Replant Bootcamp with Jimbo Stewart and Bob Bickford

Recommended Networks

The 6:4 Fellowship

Practical Shepherding

The Great Commandment Network

Renew Montana Network Partners & Friends

Resound Network – Missouri Baptists

Replant Team – North American Mission Board

Gianforte Family Foundation – Outreach/Discipleship Grants